

SpW-D detailed specification and prototyping

David Jameux
ESTEC
09/04/2013

Activity overview

ESA UNCLASSIFIED – Releasable to the Public

1. TRP activity, 200k€, direct negotiation with UoDundee
 - a. 2x10k€ prime consultancy for user requirements
2. ESA T.O. D. Jameux
3. Basis: SpW-D specs presented at the SpW WG
4. Kick-Off February - delayed
 - a. Prime consultancy procurement still on-going
5. Target: spec ready for ECSS standardisation
 - a. WG follow-up

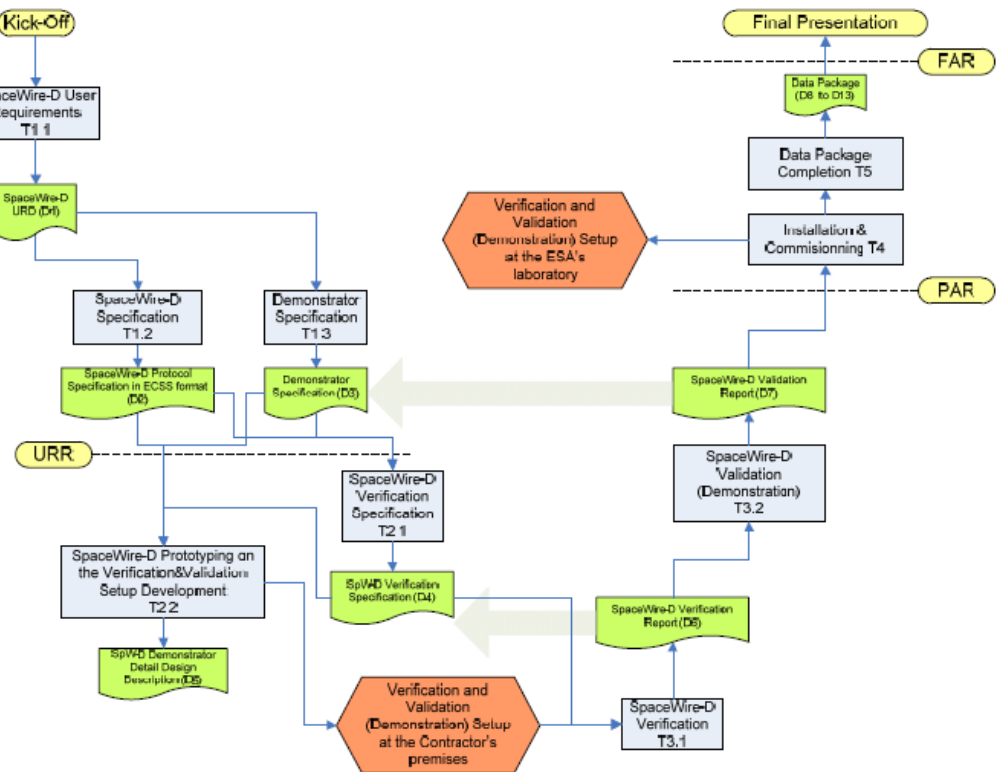


Figure 3.1-1 Work Logic: V-shape development cycle